



## WEBD 162

Class 05  
Chapter 7 Images

## Images

Web Formats:

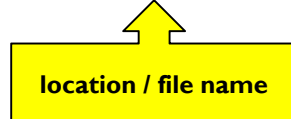
- ▶ **.gif**
  - ▶ 256 colors – clipart, icons – transparent, animated
- ▶ **.jpg**
  - ▶ 16 million colors – photos, detailed graphics
- ▶ **.png**
  - ▶ 256 – 16 million colors - transparent

▶ 2

## Images

**<img> element**

****



## Images - paths

****

****

****

▶ 4

## Images - XHTML

``




▶ 5

## Images

- ▶ inline or phrase element
- ▶ aligned at baseline
- ▶ no page break

```
<p>I had been wanting to go to Tuscany 
for a long time, and I was not disappointed.</p>
```

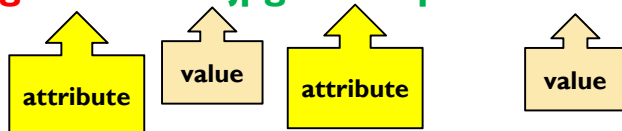
I had been wanting to go to Tuscany  for a long time, and I was not disappointed.

▶ 6

## Image Accessibility

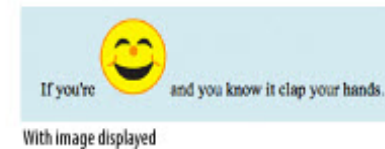
- ▶ **Screen readers**, search engines, computers
- ▶ If the image does not load / user disables images
- ▶ **“alternative”** information

``



▶ 7

## ‘alt’ varies with the browser



▶ 8

## Image Accessibility – pg 127

### ► ‘longdes’ attribute

- For longer description use an html file along with the ‘alt’ attribute

```

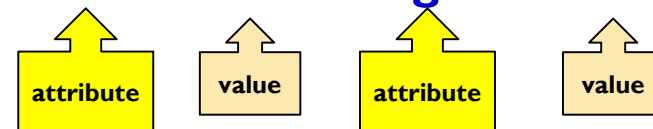
```

## Image - width, height

- pixels (or percents)
- 72 pixels in an inch

```

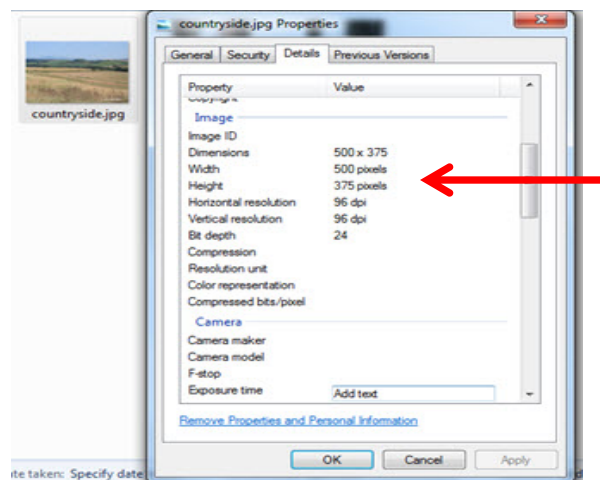
```



► 9

► 10

## Image - width, height



## Image - width, height – pg 128

**TIP**

**Using a Browser to Find Pixel Dimensions**

You can find the pixel dimensions of an image by opening it in an image-editing program, of course, but did you know you can also use a web browser?

Using Chrome, Firefox, or Safari (but, sorry, not Internet Explorer), simply open the image file, and its pixel dimensions display in the browser's title bar along with the filename. It's a handy shortcut I use all the time because I always seem to have a browser running.

► 11

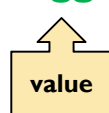
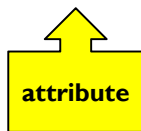
► 12

## Image - title attribute

- ▶ Functions as a tool tip
- ▶ Gives the user **additional** information

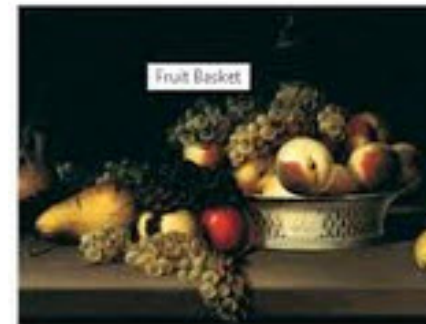
```

```



▶ 13

## Image - title attribute



▶ 14

## Image as a hyperlink

```
<a href="fido.html">
```

```

```

```
</a>
```



▶ 15

## Image as a hyperlink

- ▶ blue border around linked image
  - ▶ - displayed by older browsers



▶ 16

## Image map

- ▶ multiple “clickable” hyperlinked regions on one image



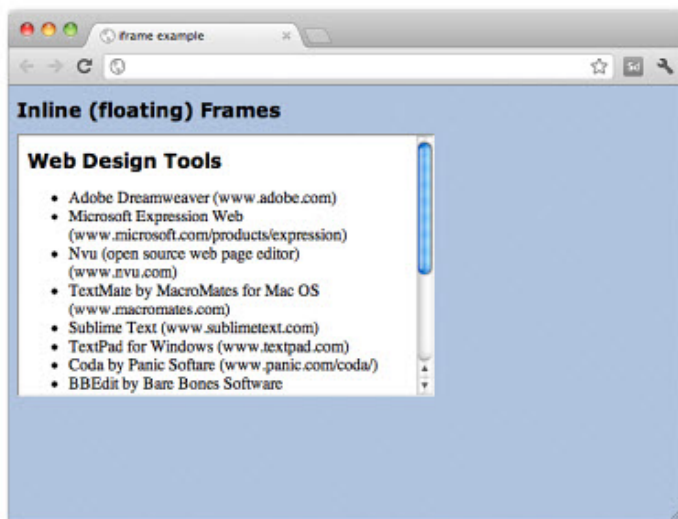
## Image map – need a program to generate coordinates



```

<map id="logomap" name="logomap">
  <area shape="circle" coords="82, 78, 80"
    href="home.htm" alt="Home">
  <area shape="rect" coords="168, 110, 225, 145"
    href="tips.htm" alt="Tips">
  <area shape="rect" coords="240, 110, 402, 145"
    href="glossary.htm" alt="Glossary">
</map>
```

## iframe – inline frame



## iframe – inline frame

```
<h1>Inline (floating) Frames</h1>
<iframe src="list.html" width="400" height="250">
  Your browser does not support inline frames. Read the <a href="list.
  html">list</a>.
</iframe>
```